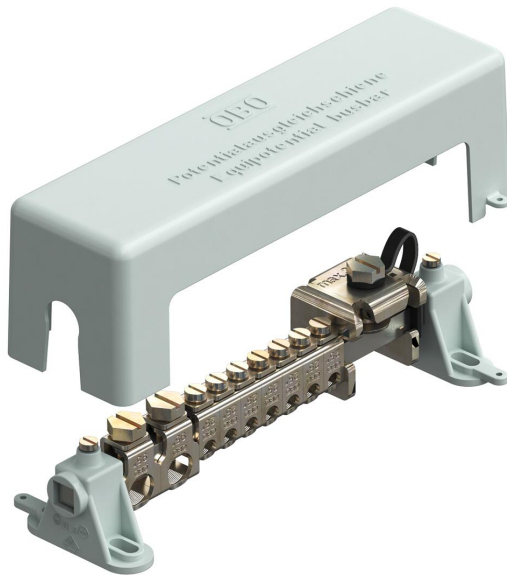


Technical data sheet

Equipotential busbar for indoors, VDE-tested

Item number: 5015650



Equipotential busbar for equipotential bonding to DIN VDE 0100-410/-540 as well as lightning protection equipotential bonding to DIN VDE 0185-305

- According to VDE 0618, Part 1
- With 10 x 10 mm clamping rail made of nickel-plated brass
- With contact-secure series terminals made of electrogalvanised steel
- Cover and rail stands made of grey polystyrene
- Sealable/labellable cover
- Lightning current carrying capacity 100 kA (10/350)
- Tension clamp with screw lock against self-loosening (e.g. required in industry)

Connection options:

- 7 single or multi-wire cables 2.5–25 mm² or fine-wire cables to 16 mm² (max. Ø 7 mm)
- 2 single or multi-wire cable 25–95 mm² or fine-wire cables to 70 mm² (max. Ø 13.5 mm)
- 1 flat conductor 30 x 3.5 mm

With sealable cover hood,
made from impact-resistant plastic



CuZn
37 Brass

Master data

| | |
|------------------------------------|-------------------------|
| Item number | 5015650 |
| Type | 1801 VDE |
| Description 1 | Equipotential busbar |
| Manufacturer | OBO |
| Dimension | 217mm |
| Colour | Grey |
| Material | Brass |
| Smallest sales unit | 1 |
| Unit of quantity | Piece |
| Weight | 55 kg |
| Weight unit | kg/100 pc. |
| CO2 Footprint (GWP) Cradle-to-Gate | 1,778 kg CO2e / 1 Piece |

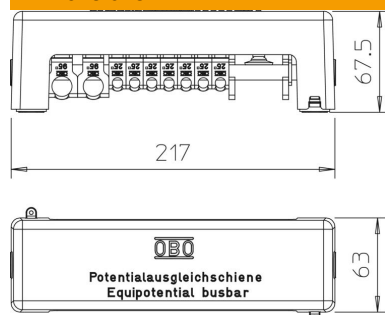
Technical data sheet

Equipotential busbar for indoors, VDE-tested

Item number: 5015650



Dimensions



| | |
|--------|---------|
| Length | 217 mm |
| Width | 63 mm |
| Height | 67.5 mm |

Technical data

| | |
|--|-------------------|
| Quantity of flat conductor connections up to 30 mm | 1 |
| Quantity of flat conductor connections up to 40 mm | 0 |
| Quantity of cable connections up to 16 mm ² , rigid | 0 |
| Quantity of cable connections up to 25 mm ² , rigid | 7 |
| Quantity of cable connections up to 6 mm ² , rigid | 0 |
| Quantity of cable connections up to 95 mm ² , rigid | 2 |
| Quantity of round conductor connections 10 mm | 0 |
| Quantity of round conductor connections 8 mm | 0 |
| Quantity of round conductor connections 8-10 mm | 0 |
| Quantity of round conductor connections, total | 0 |
| Version for | With cover hood |
| Type | Modular structure |
| Insulator | yes |
| Surface of the terminal | Electrogalvanised |
| Surface of the contact rail | Nickel-plated |
| Material of the terminal | Steel |
| Material of the contact rail | Brass |