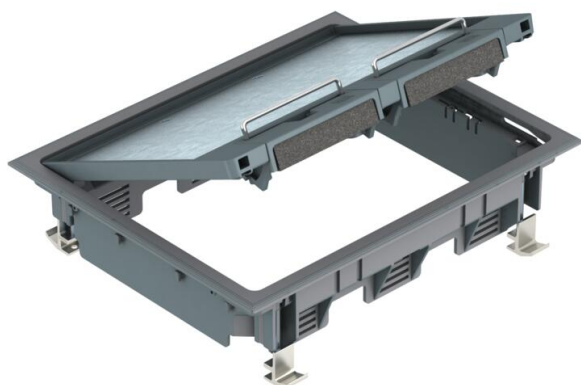


Technical data sheet

GES6 service outlet, used in raised floors

Item number: 7405260



Service unit for 6 installation devices in 3 UT universal supports for use in raised floors for indoor use. Fastening bracket in a clamping range of up to 50 mm plate thickness.

Carpet protection frame, hinged lid and cord outlet made of polyamide.

5 mm floor covering recess in the hinged lid.

Up to 9 individual Modul 45® devices can be installed.

Can also be used in conjunction with the MT mounting support. Three APMT5 cover plates can be installed for 6 installation devices. The number of installable installation devices depends on the type of installation devices.



PA Polyamide

Master data

Item number	7405260
Type	GES6 DB 7011
Description 1	Service outlet
Description 2	for raised floor mounting
Manufacturer	OBO
Dimension	273x220x61
Colour	Iron grey; RAL 7011
Material	Polyamide
Smallest sales unit	1
Unit of quantity	Piece
Weight	163.4 kg
Weight unit	kg/100 pc.
CO2 Footprint (GWP) Cradle-to-Gate	2,2081 kg CO2e / 1 Piece

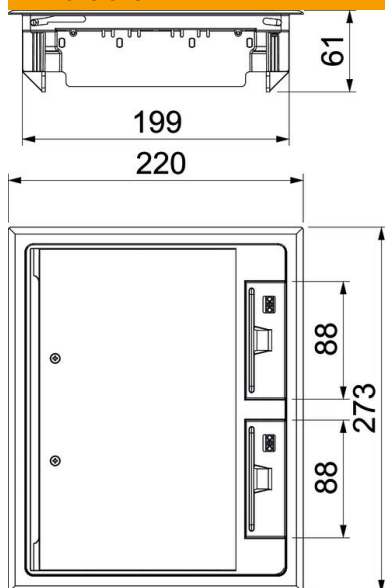
Technical data sheet

GES6 service outlet, used in raised floors

Item number: 7405260



Dimensions



Dimension h | 73 mm

Technical data

Number of mounting boxes	3
Version for	Rectangular
Cable outlet version	Swivellable cord outlet
Floor covering protection frame	yes
Floor care	Dry
Seal installation option	no
Floor height, min.	73 mm
Suitable for raised floor installation	yes
Suitable for screed-flush closed underfloor ducts	no
Suitable for cavity floor installation	yes
Suitable for wet care	no
Suitable for underfloor box	250/350
Suitable for underfloor ducts	no
Device support to accept mounting boxes	yes
Length of external dimensions	220 mm
Length of installation dimensions	199 mm
With floor covering recess	yes
Frame version	Carpet protection frame
Protection rating (IP) when used	IP20
Protection rating (IP) when unused	IP40
Protection rating IK code	IK08
Heavy-duty version	no
Clamping range D, max.	62 mm
Clamping range D, min.	22 mm
Approvals	VDE

Technical data sheet

GES6 service outlet, used in raised floors

Item number: 7405260



Technical data

Opening mechanism	Handle
Floor covering thickness	5 mm