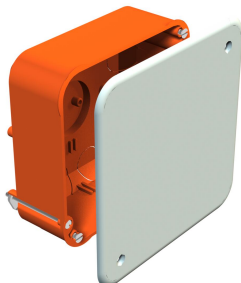


# Technical data sheet

## Cavity wall connection box

Item number: 2003449



Cavity wall connection box for use in cavity walls with an installation depth of at least 50 mm and a plate thickness of 7-35 mm. With white cover and cover screws. Suitable for installation of standard rails (hat and support rails) for series terminals.

- 8 entries of Ø 20 mm
  - 8 entries for NYM cables 3 x 1.5 mm<sup>2</sup>
  - 4 entries for data cables (extra-low voltage)
- According to IEC 60670-1, IEC 60670-22 and DIN 49073-1.



**PP** Polypropylene

### Master data

Item number	2003449
Type	HV 100 KD
Description 1	Hollow wall, connection box
Description 2	cavity wall
Manufacturer	OBO
Dimension	105x105x50
Colour	Orange
Material	Polypropylene
Smallest sales unit	25
Unit of quantity	Piece
Weight	6.3 kg
Weight unit	kg/100 pc.
CO2 Footprint (GWP) Cradle-to-Gate	0,0122 kg CO2e / 1 Piece

### Dimensions

Length	105 mm
Width	105 mm
Height	50 mm

# Technical data sheet

## Cavity wall connection box

Item number: 2003449



### Technical data

No. of entries	20
Type of entry	NYM cables, data cables and corrugated pipes
Type of housing penetration	Pre-marking
Version for	Single
Type	Connection socket/box
Equipment	Without
Cover	Not transparent
Cover fastening	Screwed
Entry from rear	yes
Entries	20
Flame-resistant	Acc. to VDE 0471/DIN 695 Part 2-1, test temperature 850°C
Shape	Square
Maintain electrical functions	Without
Floor height, min.	50 mm
for pipe diameter	20 mm
Suitable for plate thickness, max.	35 mm
Suitable for plate thickness, min.	7 mm
Halogen-free	yes
Max. Conductor cross-section	4 mm <sup>2</sup>
With screening	no
With nail strap	no
With bolts	yes
Mounting type	Cavity wall
Nominal cross-section, max.	4 mm <sup>2</sup>
Nominal cross-section, min.	2.5 mm <sup>2</sup>
Sealable	no
Impact-resistant	no
Protection rating	IP30
Support	Without
Airtight	no
Rated voltage	400 V