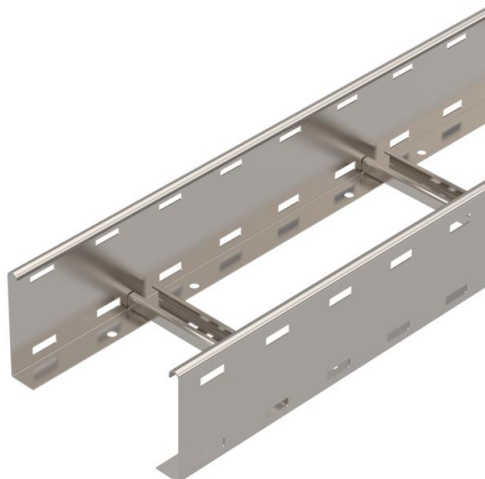


Technical data sheet

Cable ladder LG 110, 6 m VS A2

Item number: 6216492



Cable ladder with perforated side rail of side height 110 mm with riveted C profile rungs, open in an upwards direction. The cable ladder is shipped folded up.

You can find the appropriate U clamp of type 2056 in the vertical ladder systems chapter. Magnetic shield insulation without cover 10 dB, with cover 15 dB.



A2 Stainless steel

2B Bright, treated

Master data

| | |
|---------------------|--------------------------|
| Item number | 6216492 |
| Type | LG 112 VS6 A2 |
| Description 1 | Cable ladder |
| Description 2 | perforated, with VS rung |
| Manufacturer | OBO |
| Dimension | 110x200x6000 |
| Material | Stainless steel |
| Surface | Bright, treated |
| Surface standard | |
| Smallest sales unit | 6 |
| Unit of quantity | Metre |
| Weight | 377.666 kg |
| Weight unit | kg/100 m |

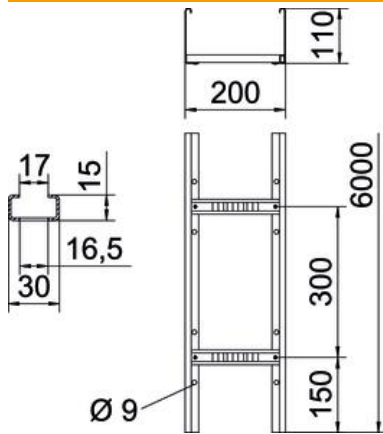
Technical data sheet

Cable ladder LG 110, 6 m VS A2

Item number: 6216492



Dimensions



| | |
|---------------------|----------|
| Dimension | 110x200 |
| Length | 6,000 mm |
| Length | 6,000 ft |
| Width | 200 mm |
| Height | 110 mm |
| Dimension B | 200 mm |
| Rung slot dimension | 17.00 |

Technical data

| | |
|----------------------|-----------------------|
| Usable cross-section | 188 cm ² |
| Usable cross-section | 18800 mm ² |
| Rung distance | 300 mm |
| Rail thickness | 1.5 mm |

Loads

| | |
|-----------------------|-----------|
| Support spacing 2.0 m | 3.1 kN/m |
| Support spacing 2.5 m | 2 kN/m |
| Support spacing 3.0 m | 1.3 kN/m |
| Support spacing 3.5 m | 0.9 kN/m |
| Support spacing 4.0 m | 0.6 kN/m |
| Support spacing 4.5 m | 0.5 kN/m |
| Support spacing 5.0 m | 0.45 kN/m |