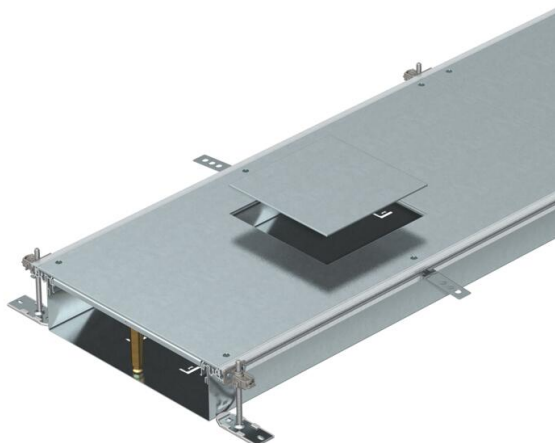


# Technical data sheet

## Trunking unit for GES4, height 100–150 mm

Item number: 7424620



Ready-to-mount trunking unit with three or six device installation lids for cable laying and the installation of flush-mount units of nominal size 4, consisting of the trunking base (floor trough with side and floor covering contact profiles) and trunking lid with blank covered mounting opening. Floor trough with holding straps for self-contacting mounting of separating retainers. The scope of delivery contains 6 height-adjustable fixing brackets, 6 screed anchors and lid butt seals (3x for nominal trunking widths of 200 and 300) or height-adjustable lid butt supports: 3x for nominal trunking width 400 and 6x for nominal trunking widths 500 and 600. Trunking lid screwed down when delivered. With screw-on device installation lids, each with an installation opening for an installation unit nominal size 4.



**St** Steel

**FS** Strip galvanized

### Master data

Item number	7424620
Type	OKA-W30010050D4
Description 1	Flushfloor trunking unit
Description 2	for service unit GES18
Manufacturer	OBO
Dimension	2400x300x100
Material	Steel
Surface	Strip galvanized
Surface standard	DIN EN 10346
Smallest sales unit	2.4
Unit of quantity	Metre
Weight	1439.6 kg
Weight unit	kg/100 m
CO2 Footprint (GWP) Cradle-to-Gate	64,7423 kg CO2e / 1 Meter

### Dimensions



Length	2,400 mm
Width	300 mm

# Technical data sheet

Trunking unit for GES4, height 100–150 mm

Item number: 7424620



## Technical data

Mounting opening cover	yes
Covers	3
Number of insertable partitions	2
Number of planned flush-mount units	3
Number of compartments	3 St.
Mounting system fastening type	Floor
Floor plate	yes
Cover fastening, locking	no
Seal installation option	yes
Installation opening for on-floor tank	no
Decouplable	no
Suitable for expansion joint	no
Mesh wall	no
Trunking height, max.	150 mm
Duct height, min.	100 mm
Cover material thickness	4
Minimum screed height	100
With connection opening	yes
With equipotential bonding	no
With separating retainer	no
With overhang	yes
Mounting opening	For service outlet
Mounting opening	Square
Nominal size for device installation units	4
Height-adjustment range, max.	150 mm
Height-adjustment range, min.	100 mm
Removable cover	yes
Separating retainer fastening	stecken
Separating retainer fastening	Plug