

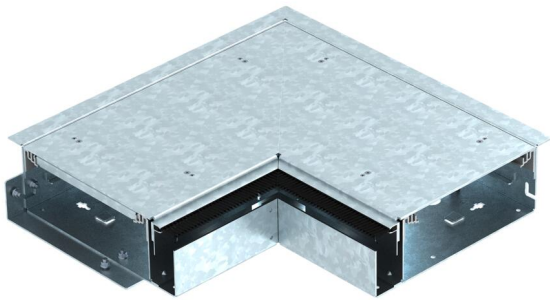
Technical data sheet

External corner, without height adjustment unit

Item number: 7403831



Ready-to-mount external corner, consisting of a trunking base, two lids, height-adjustable side profiles and brush bar arranged on the wall side for cable alignment. The scope of delivery contains one lid butt seal and a connector. For height adjustment five levelling units are required.



St	Steel
FS	Strip galvanized

Master data

Item number	7403831
Type	OKB AE 25085 ON
Description 1	External corner
Description 2	with brush bar
Manufacturer	OBO
Dimension	424x424x87
Material	Steel
Surface	Strip galvanized
Surface standard	DIN EN 10346
Smallest sales unit	1
Unit of quantity	Piece
Weight	858 kg
Weight unit	kg/100 pc.
CO2 Footprint (GWP) Cradle-to-Gate	41,0954 kg CO2e / 1 Piece

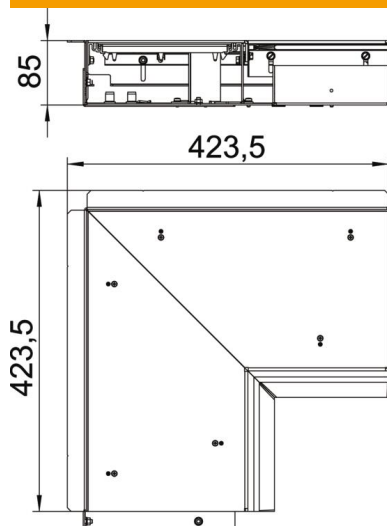
Technical data sheet

External corner, without height adjustment unit

Item number: 7403831



Dimensions



Length	422 mm
Width	250 mm
Height	93 mm
Dimension h	85 mm

Technical data

Mounting opening cover	no
Floor plate	yes
Floor care	Dry
Cover fastening, locking	no
Seal installation option	no
Installation opening for on-floor tank	no
Decouplable	yes
Function	External corner
Suitable for expansion joint	no
Suitable for screed-flush closed underfloor ducts	no
Suitable for flushfloor, open underfloor trunking	yes
Suitable for screed-covered underfloor ducts	no
Minimum screed height	93
With connection opening	no
With equipotential bonding	no
With separating retainer	no
With overhang	yes
Height-adjustment range, min.	0 mm
Removable cover	yes
Separating retainer fastening	stecken
Separating retainer fastening	Plug