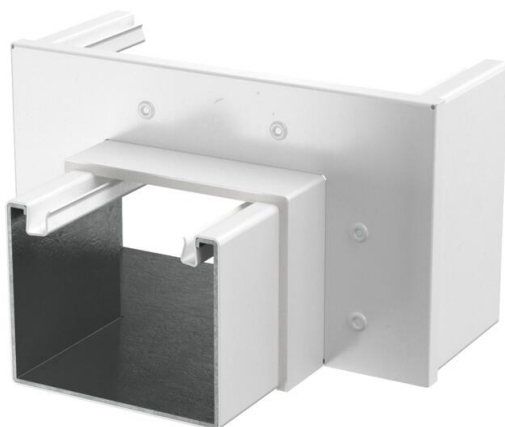


Technical data sheet

Reducer, straight, from 120 mm to 80 mm duct height, pure white

Item number: 7218104



Reducer with intumescent fire protection mesh for symmetrical reduction of straight duct sections from PLM D 1220 to PLM D 0810. Suitable for direct wall and ceiling mounting, mounting below system floors and on support systems. Tool-free joint mounting with PLM SI joint connector. The cover is snapped on without tools, allowing rapid inspection and retroassignment. The cover overhang allows offset cover mounting for continuous equipotential bonding of the entire duct section.



St	Steel
P	Powder-coated

Master data

Item number	7218104
Type	PLM RP 1220 RW
Description 1	Reducing piece
Description 2	with fire protection mesh
Manufacturer	OBO
Dimension	160x200x120
Colour	Pure white; RAL 9010
Material	Steel
Surface	Powder-coated
Surface standard	
Smallest sales unit	1
Unit of quantity	Piece
Weight	93 kg
Weight unit	kg/100 pc.
CO2 Footprint (GWP) Cradle-to-Gate	4,4929 kg CO2e / 1 Piece

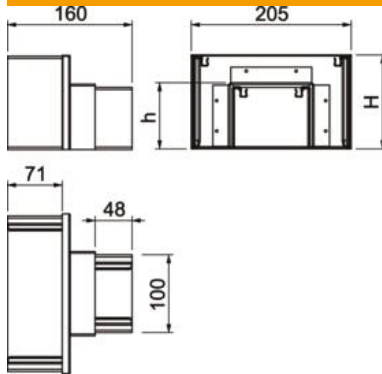
Technical data sheet

Reducer, straight, from 120 mm to 80 mm duct height, pure white

Item number: 7218104



Dimensions



Dimension B	200 mm
Dimension h	80 mm
Dimension H	120 mm

Technical data

Number of flammable sides	4
Cover fastening	Miscellaneous
Jacketing	Steel