

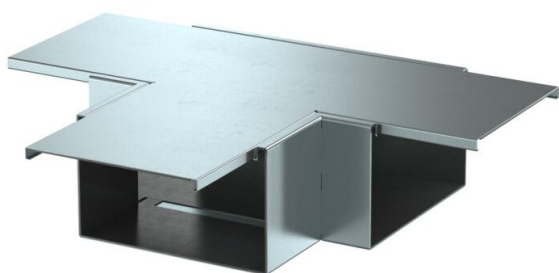
Technical data sheet

T branch piece, duct height 120 mm, FS

Item number: 7218082



Tee with intumescent fire protection mesh for PYROLINE® Rapid PLM installation duct. Suitable for direct wall and ceiling mounting, mounting below system floors and on support systems. Tool-free joint mounting with PLM SI joint connector. The cover is snapped on without tools, allowing rapid inspection and retroas- signment. The cover overhang allows offset cover mounting for continuous equipotential bonding of the entire duct section.



St	Steel
FS	Strip galvanized

Master data

Item number	7218082
Type	PLM TB 1220 FS
Description 1	T-branch
Description 2	with fire protection mesh
Manufacturer	OBO
Dimension	600x400x120
Colour	zinc
Material	Steel
Surface	Strip galvanized
Surface standard	DIN EN 10346
Smallest sales unit	1
Unit of quantity	Piece
Weight	343.6 kg
Weight unit	kg/100 pc.
CO2 Footprint (GWP) Cradle-to-Gate	12,986 kg CO2e / 1 Piece

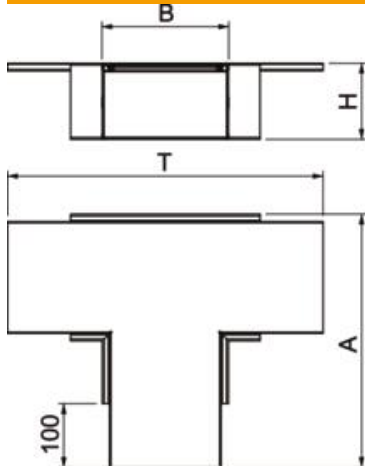
Technical data sheet

T branch piece, duct height 120 mm, FS

Item number: 7218082



Dimensions



Dimension A	400 mm
Dimension B	200 mm
Dimension H	120 mm
Dimension t	600 mm

Technical data

Number of flammable sides	4
Classification EI – installation duct	90
With perforation	yes
Usable cross-section	18500 mm ²
Partitions possible	yes
Jacketing	Steel