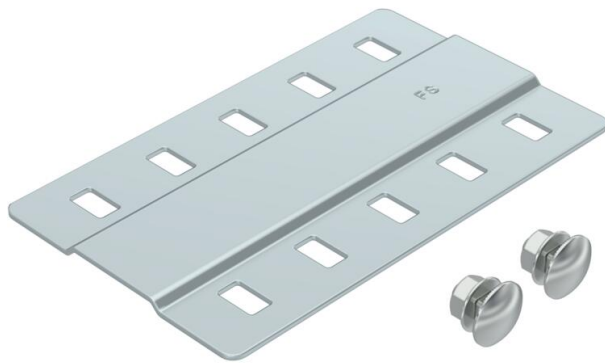


Technical data sheet

Joint plate FS

Item number: 7070209



Wide joint plate for use in all cable trays and wide span cable trays. Including fastening material.
For function maintenance at a width of 100 mm, the quantity of supplied M6 truss-head bolts should be increased to four, whilst for widths 200 and 300 mm, it should be increased to six.



St

Steel

FS

Strip galvanized

Master data

Item number	7070209
Type	SSLB 150 FS
Description 1	Joint plate
Description 2	wide, with 2 fastenings
Manufacturer	OBO
Dimension	B150mm
Colour	zinc
Material	Steel
Surface	Strip galvanized
Surface standard	DIN EN 10346
Smallest sales unit	20
Unit of quantity	Piece
Weight	14 kg
Weight unit	kg/100 pc.
CO2 Footprint (GWP) Cradle-to-Gate	0,384 kg CO2e / 1 Piece

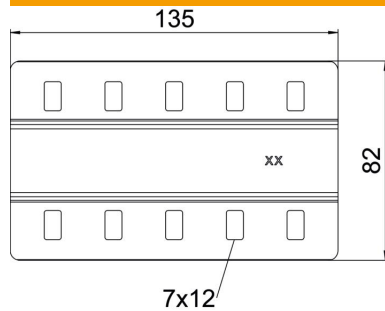
Technical data sheet

Joint plate FS

Item number: 7070209



Dimensions



Length	150 mm
Width	135 mm
Width	6 in
Height	4 mm
Plate thickness	1.5 mm
Dimension B	150 mm

Technical data

Quantity of bolts	2 St.
Version for	Joint plate
Maintain electrical functions	yes
Suitable for mesh cable tray	no
Suitable for cable ladder	no
Suitable for cable tray	yes
Adjustable connector, horizontal	no
Articulated connector, vertical	no
Rustproof steel, pickled	no
Connection type	Screw connector
Wide-span version	yes