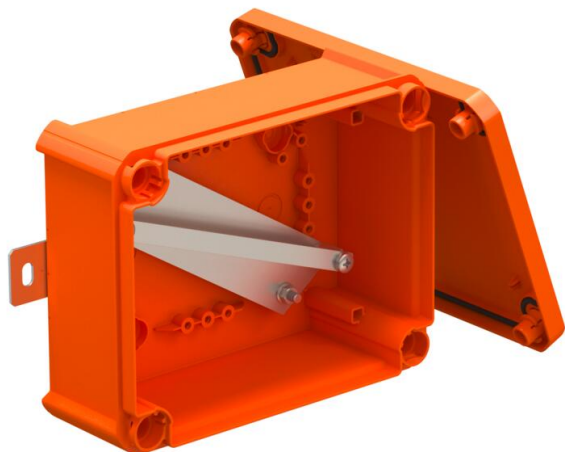


Technical data sheet

Closed FireBox T160, empty

Item number: 7205782



Unequipped, closed connection or junction box for free termination with ceramic terminals and cable glands. Dimension A states the available support rail length for the wiring terminals. Sufficiently large wiring compartment through diagonally arranged support rail. Fastening on easily accessible external flaps made of stainless steel. Approved for cable systems that maintain the electrical function according to DIN 4102 Part 12 with the classes E30, E60 and E90.

E30 E60 E90 IP 66

PP Polypropylene

Master data

Item number	7205782
Type	T160E 0VA
Description 1	Junction box
Description 2	for function maintenance
Manufacturer	OBO
Dimension	190x150x77
Colour	Pastel orange; RAL 2003
Material	Polypropylene
Smallest sales unit	1
Unit of quantity	Piece
Weight	49.203 kg
Weight unit	kg/100 pc.
CO2 Footprint (GWP) Cradle-to-Gate	3,4338 kg CO2e / 1 Piece

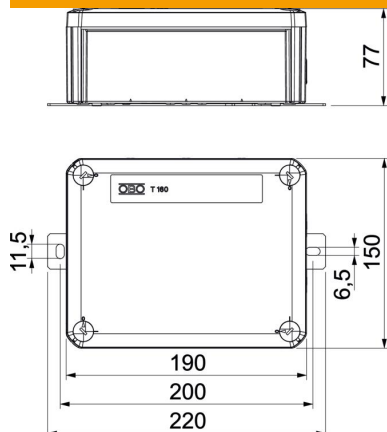
Technical data sheet

Closed FireBox T160, empty

Item number: 7205782



Dimensions



Length	190 mm
Width	150 mm
Height	77 mm
Dimension A	130 mm
Dimension B	150 mm
Dimension H	77 mm
Dimension L	190 mm
Dimension L1	200 mm
Dimension L2	220 mm

Technical data

Equipment	Support rail
Cover	Not transparent
Cover fastening	Screwed
Entry from rear	no
Maintain electrical functions	E 90
Halogen-free	yes
Clear internal dimensions	176x135x67 mm
With screening	no
with lid	yes
Nominal cross-section, max.	10 mm ²
Nominal cross-section, min.	0.5 mm ²
Sealable	no
Protection rating	IP66