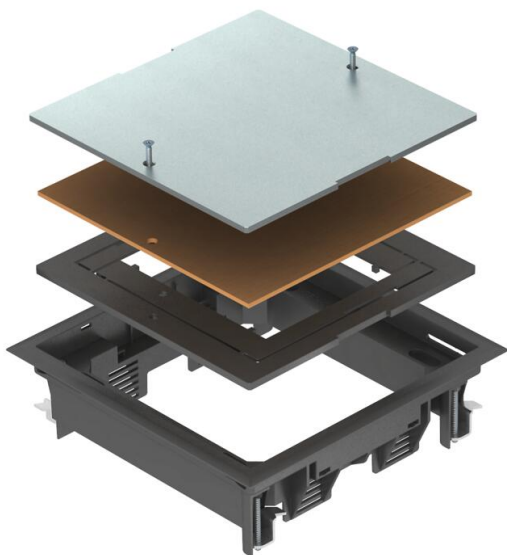


Technical data sheet

ZES4 inspection cover

Item number: 7406702



Junction box insert for blanking locking of a square mounting opening of nominal size 4 in duct or trunking systems and system floors for indoor use.

Floor covering recess is set to 5 mm on delivery, if necessary adjustable to 3, 8 or 10 mm.



PA Polyamide

Master data

Item number	7406702
Type	ZES4-2 U10T 9011
Description 1	Junction box insert
Description 2	for universal mounting
Manufacturer	OBO
Colour	Graphite black; RAL 9011
Material	Polyamide
Smallest sales unit	1
Unit of quantity	Piece
Weight	158 kg
Weight unit	kg/100 pc.
CO2 Footprint (GWP) Cradle-to-Gate	4,8284 kg CO2e / 1 Piece

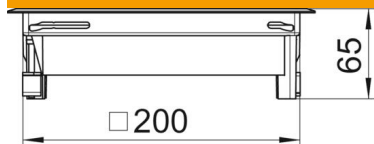
Technical data sheet

ZES4 inspection cover

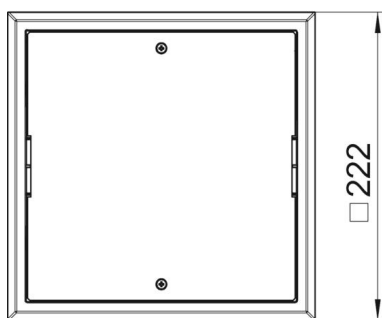
Item number: 7406702



Dimensions



Length	222 mm
Width	222 mm
Height	65 mm



Technical data

Number of installable devices	0
Version for	Square
Floor covering protection frame	yes
Floor care	Dry
Floor height, min.	62 mm
Suitable for raised floor installation	yes
Suitable for cavity floor installation	yes
Suitable for wet care	no
Suitable for underfloor box	250/350
Length of external dimensions	222 mm
Length of installation dimensions	201 mm
Nominal size for device installation units	4
Clamping range D, max.	75 mm
Clamping range D, min.	8 mm
Vertical load, large area	to 5,000 N
Vertical load, small area	to 3,000 N
Floor covering thickness	5 mm
Floor covering thickness max.	10 mm